

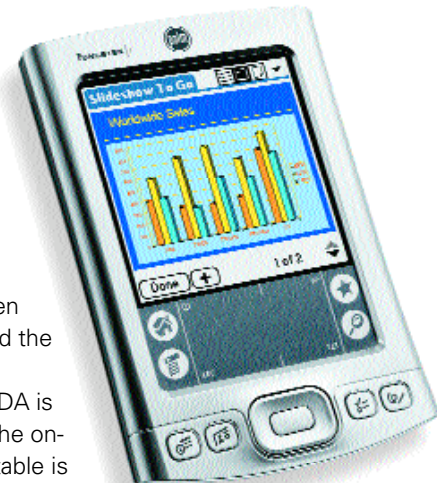
# INGEAR



## Light Bright Palm

Tucked neatly between the budget Zire 21 and the flagship Tungsten T3, Palm's new Palm E PDA is targeted squarely at the on-the-go executive. Notable is the E's vivid 320-by-320 trans-reflective screen, its light weight (only 4.6 ounces), and its 126-MHz CPU and 32MB of RAM, both of which outclass its direct competitors.

Palm E, US\$200; [www.palm.com](http://www.palm.com).

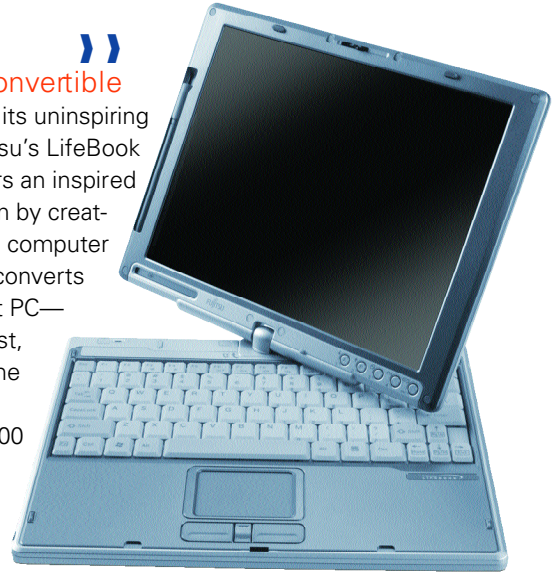


## Sporty Convertible

Aside from its uninspiring name, Fujitsu's LifeBook T3000 offers an inspired bit of design by creating a laptop computer that easily converts into a tablet PC—just lift, twist, and close the screen.

The T3000 also bears Intel's new Centrino badge, incorporating a 1.4-GHz Pentium M processor and Intel's Pro/Wireless 2100 802.11b networking capability.

Fujitsu LifeBook T3000, US\$1700; [www.fujitsu.com](http://www.fujitsu.com).

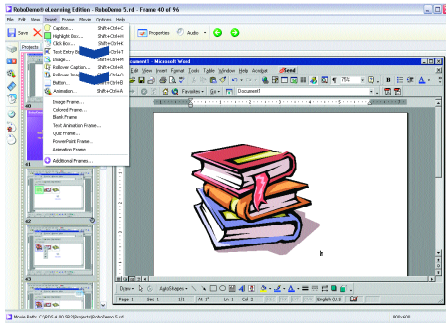


## Affordable Epson

There was a time when affordable ink-jet printers meant monochrome prints, mediocre performance, and print speeds sure to test your patience. But no more. Epson's Stylus C64 produces borderless 4-by-6-

inch snapshots, creates color prints of up to 5760-by-1440 dpi, and prints at speeds of up to 17 pages per minute. Oh, and its street price is only US\$59.

Epson C64, US\$59; [www.epson.com](http://www.epson.com).



## Robo E-Learning

Don't know Flash? Don't worry. RoboDemo lets users record the use of software applications and online activities and then easily convert them into Flash-based training simulations. Simulations can then be viewed across multiple browsers, operating systems, and devices.

A new Flash Import function lets users incorporate existing Flash content, while full-motion recording lets users record on-screen rich media and animation.

RoboDemo 5.0 E-Learning Edition, US\$499; [www.robodemo.com](http://www.robodemo.com).